

Exportin 5 Antibody
Rabbit mAb
Catalog # AP92010**Specification**

Exportin 5 Antibody - Product Information

Application	WB, IHC, FC, ICC
Primary Accession	Q9HAV4
Reactivity	Rat
Clonality	Monoclonal
Other Names	
Exp5; Exportin 5; Ranbp21; xpo5;	

Isotype	Rabbit IgG
Host	Rabbit
Calculated MW	136311 Da

Exportin 5 Antibody - Additional Information

Dilution	WB~~1:1000 IHC~~1:100~500 FC~~1:10~50 ICC~~N/A
Purification	Affinity-chromatography
Immunogen	A synthesized peptide derived from human Exportin 5
Description	Mediates the nuclear export of proteins bearing a double-stranded RNA binding domain (dsRBD) and double-stranded RNAs (cargos). XPO5 in the nucleus binds cooperatively to the RNA and to the GTPase Ran in its active GTP-bound form.
Storage Condition and Buffer	Rabbit IgG in phosphate buffered saline , pH 7.4, 150mM NaCl, 0.02% sodium azide and 50% glycerol. Store at +4°C short term. Store at -20°C long term. Avoid freeze / thaw cycle.

Exportin 5 Antibody - Protein Information**Name** XPO5**Synonyms** KIAA1291, RANBP21**Function**

Mediates the nuclear export of proteins bearing a double- stranded RNA binding domain (dsRBD) and double-stranded RNAs (cargos). XPO5 in the nucleus binds cooperatively to the RNA and to the GTPase Ran in its active GTP-bound form. Proteins containing dsRBDs can associate with this trimeric complex through the RNA. Docking of this complex to the nuclear pore complex (NPC) is

mediated through binding to nucleoporins. Upon transit of a nuclear export complex into the cytoplasm, hydrolysis of Ran-GTP to Ran-GDP (induced by RANBP1 and RANGAP1, respectively) cause disassembly of the complex and release of the cargo from the export receptor. XPO5 then returns to the nuclear compartment by diffusion through the nuclear pore complex, to mediate another round of transport. The directionality of nuclear export is thought to be conferred by an asymmetric distribution of the GTP- and GDP-bound forms of Ran between the cytoplasm and nucleus. Overexpression may in some circumstances enhance RNA-mediated gene silencing (RNAi). Mediates nuclear export of isoform 5 of ADAR/ADAR1 in a RanGTP-dependent manner. (Microbial infection) Mediates the nuclear export of adenovirus VA1 dsRNA.

Cellular Location

Nucleus. Cytoplasm. Note=Shuttles between the nucleus and the cytoplasm

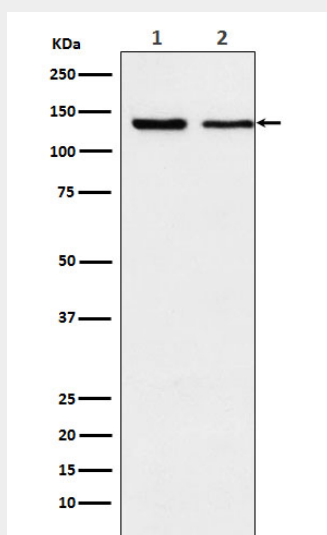
Tissue Location

Expressed in heart, brain, placenta, lung, skeletal muscle, kidney and pancreas.

Exportin 5 Antibody - Protocols

Provided below are standard protocols that you may find useful for product applications.

- [Western Blot](#)
- [Blocking Peptides](#)
- [Dot Blot](#)
- [Immunohistochemistry](#)
- [Immunofluorescence](#)
- [Immunoprecipitation](#)
- [Flow Cytometry](#)
- [Cell Culture](#)

Exportin 5 Antibody - Images

Western blot analysis of Exportin 5 expression in (1) K562 cell lysate; (2) NIH/3T3 cell lysate.